

# 25/30/35BH-9

Electric Counterbalance Trucks

MOVING YOU FURTHER

HYUNDAI MATERIAL HANDLING



 **HYUNDAI**  
MATERIAL HANDLING



You can visit the website  
by scanning the QR code.

PLEASE CONTACT

[www.hyundai-mh.com](http://www.hyundai-mh.com)

2019. 06 Rev. 10

\*Photo may include optional equipment.

 **HYUNDAI**  
MATERIAL HANDLING

# Your satisfaction is our priority!

Hyundai introduces a new line of **9-series** battery forklift trucks. The newly designed 4 wheel counterbalance trucks provide every operator comfortable driving, increased productivity and easy maintenance.

## Compact forklift with proven AC technology

- Maximum performance
- Comfortable operating room
- Battery side loading system
- Curve control system
- Fingertip controlled mini levers available (optional)
- Weight Indicator(optional)



■ Some of the photos may include optional equipment.



# High Efficiency & Optimal Performance



Efficient, smooth running and powerful performance make your work more productive.

**25/30/35BH-9**



### More efficient operating control levers (Optional)

Electronic directional control and secondary horn are mounted to the hydraulic lift lever for quick and precise maneuvering.



### Finger tip control levers (Optional)

The finger tip control lever allows more precise control and fatigue-free working. The ergonomically designed armrest can be adjusted up, down, forward and backward for various operator's body type.

■ Some of the photos may include optional equipment.



### Advanced drive and lift performance with proven durability and low maintenance

The enclosed drive and pump motor with AC technology combine power, high maintenance intervals and excellent durability. The brushless AC motors offer improved efficiency and reduction maintenance cost.



■ Some of the photos may include optional equipment.

### Curve control

Curve Control limits travel speed based on turning radius, reducing speed for a smooth, precise turning operation for the driver.



Limit the speed



### Dual drive system

Using a dual drive system will minimise aisle width and energy consumption. Plus, the drive units and AC motors intergrated in the front axle provide the operator with extremely improved gradient capacity.



### Auto fork leveling system (Optional)

In order to improve productivity the auto fork leveling system will automatically stop the tilt movement when the mast is in a straight position.

Max.Gradeability (loaded)		Max.Travel Speed (Unloaded)	
Model	%	Model	Km / h
25BH-9	26	25BH-9	19
30BH-9	22	30BH-9	19
35BH-9	19	35BH-9	19

### Anti roll back system, travel speed and gradeability

Anti Roll-back system offers protection against the machine rolling back on a ramp in combination with exceptional ramp start capabilities.



# Advanced Safety

The safely designed driver's space makes your operating more comfortable.

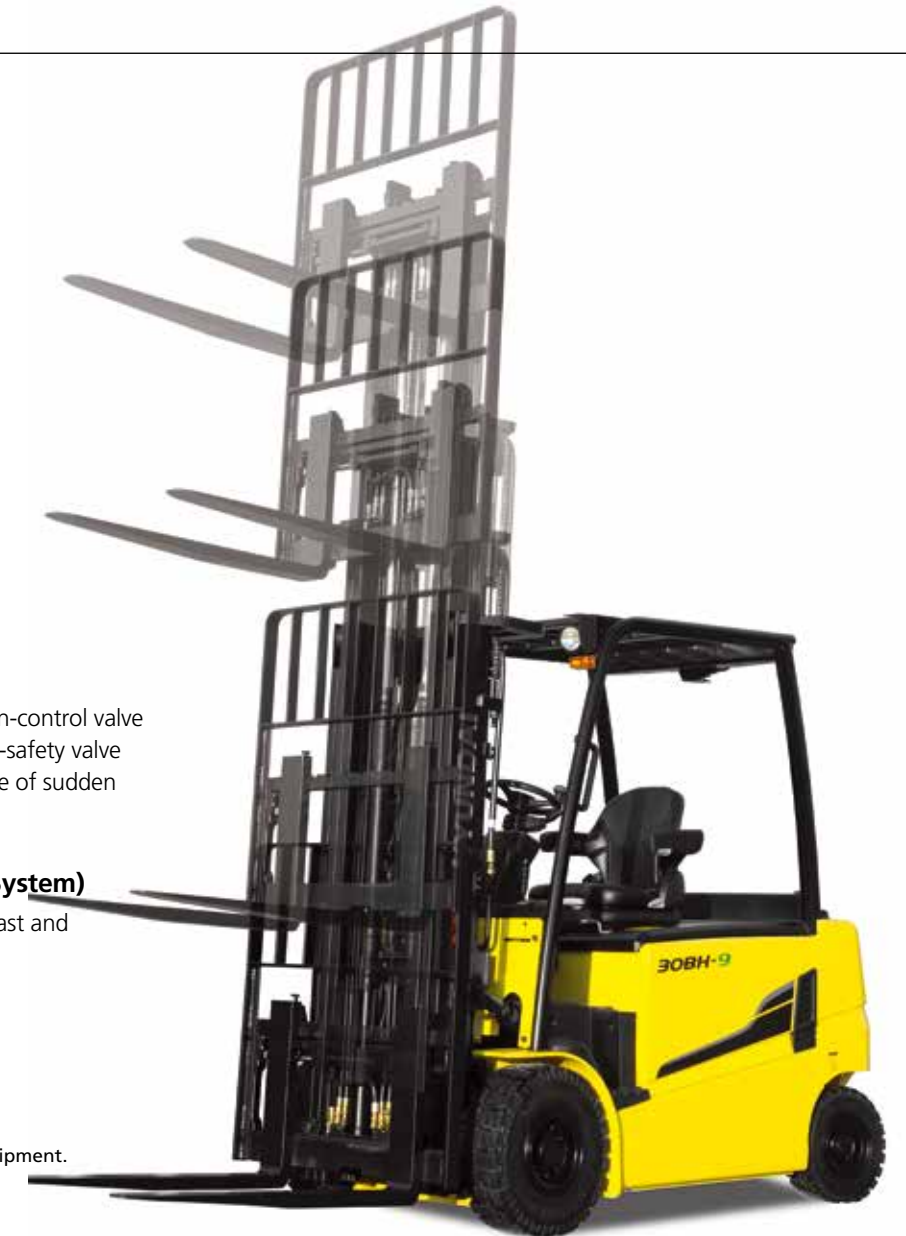
**25/30/35BH-9**



■ Some of the photos may include optional equipment.

## Excellent visibility for safe operation

Optimized lift cylinder arrangement provides operator with wider visibility.



## Fork safety features

When the forks are being lowered, a down-control valve maintains the controlled speed. The down-safety valve prevents forks from dropping down in case of sudden damage of hydraulic line.

## OPSS(Operator Presence Sensing System)

When the operator is not in the seat all mast and drive movements are impossible.

**Lift Lock** **Tilt Lock** **Drive Lock**

■ Some of the photos may include optional equipment.



## Panoramic mirror

The panoramic mirror expands the driver's view when backing up.

## Strong overhead guard

Exceeding ISO 6055 and ANSI regulations, the overhead guard offers great protection combined with excellent all around visibility.



## Safety lamps & rear reflectors

LED combination lights and halogen headlights offer the driver visibility in all circumstances. Rear reflectors mounted on the counterweight enhance safety for the driver and the application.



# Optimised Ergonomics & Fast and Easy Maintenance



An ideal arrangement of components ensures easy access and convenience for maintenance.

**25/30/35BH-9**



## Spacious operator cabin

The newly designed cabin was conceived for more space, a wider field of view and operator comfort.

■ Some of the photos may include optional equipment.



## Optimized pedal position and floor mat

The position of accelerator and throttle have been optimized through human engineering.



## Large entrance step

Wide and non-slip step offers convenience and safety when entering and exiting truck.



## Adjustable steering wheel

To achieve a comfortable drive position, the angle of the steering column can easily be adjusted through a lever on the right-hand side of the steering column.



## Grammer seat

An easily adjustable suspension seat, based on a human engineering design, provides greater comfort reducing operator fatigue.



## Advanced LCD Monitor

The LCD color monitor with 3.5 inch graphic smart display allows the operator to easily and efficiently control the machine. The monitor provides information about speed level, steer angle & travel direction, battery discharge indicator, hour meter & working mode. The optional load indicator displays the load weight in the monitor. The operator can select various performance modes to meet all working conditions. It is available multi-languages (maximum 11) for operator.

■ Some of the photos may include optional equipment.

**H** (High) mode **N** (Normal) mode **E** (Economic) mode **Turtle mode**



## Easy battery replacement

The battery compartment is equipped with a side battery removal assembly for easy removal and replacement.



## Brake oil reservoir with level sensor

The enhanced brake oil reservoir, located in the upper left dash, is equipped with an electronic level sensor and easily visible through the monitor.



# New 9 Series

25/30/35BH-9

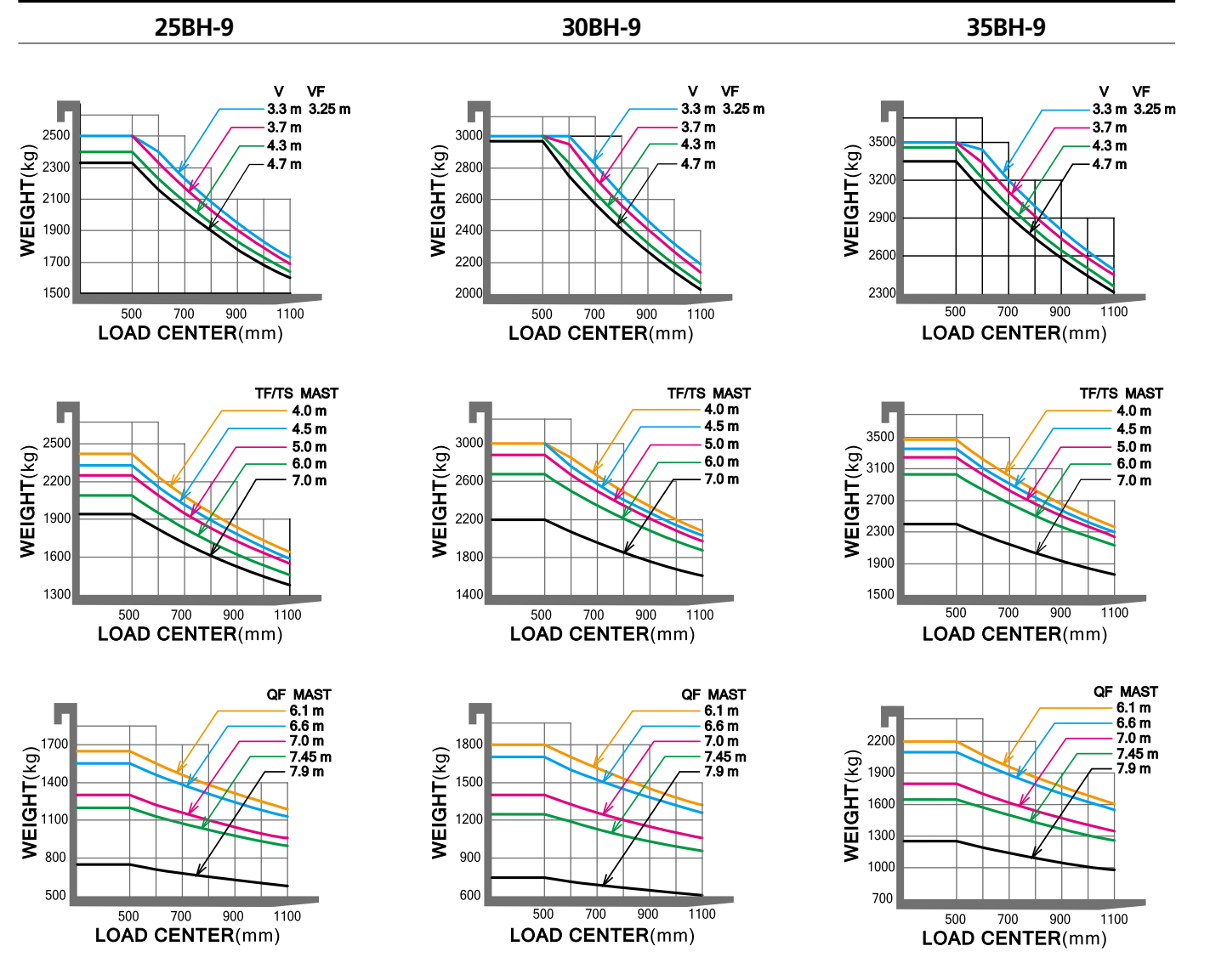
## Mast Specification (35BH-9)

Mast Type	Maximum Fork Height		Overall Height (Lowered)		Free Lift Height						Tilt Angle		Load capacity w/o side shift		Load capacity w/side shift		Truck Weight (Unloaded)		
					With Load Backrest		Without Load Backrest		Without Load Backrest (3/4-SPOOL)		Fwd	Bwd	24 in LC	500mm LC	24 in LC	500mm LC			
	in	mm	in	mm	in	mm	in	mm	in	mm	deg	deg	lb	kg	lb	kg	lb	kg	
2-STAGE LIMITED FREE LIFT	V300	118.3	3005	82.4	2093	4.5	115	4.5	115	4.5	115	6	8	7000	3500	7000	3500	12306	5582
	V330	130.1	3305	88.3	2243							6	8	7000	3500	7000	3500	12357	5605
	V350	138.0	3505	92.2	2343							6	8	7000	3500	7000	3500	12398	5624
	V370	145.9	3705	98.1	2493							6	8	7000	3500	7000	3500	12451	5648
	V400	157.7	4005	104.1	2643							6	8	7000	3500	7000	3430	12503	5671
	V430	169.5	4305	110.0	2793							6	6	7000	3500	7000	3350	12615	5722
	V450	177.4	4505	115.9	2943							6	6	7000	3450	7000	3300	12685	5754
	V470	185.2	4705	119.8	3043							6	6	7000	3400	6810	3250	12719	5770
V500	197.0	5005	125.7	3193	6	6	6920	3300	6620	3150	12772	5793							
2-STAGE FULL FREE LIFT	VF/V5295	117.2	2976	82.4	2093	35.9	913	54.2	1377	54.2	1377	6	6	7000	3500	7000	3500	12385	5618
	VF/V5325	129.0	3276	88.3	2243	41.9	1063	60.1	1527	60.1	1527	6	6	7000	3500	7000	3430	12458	5651
	VF/V5345	136.9	3476	92.2	2343	45.8	1163	64.1	1627	64.1	1627	6	6	7000	3500	7000	3350	12531	5684
3-STAGE FULL FREE LIFT	TF370	145.9	3705	74.5	1893	28.1	713	46.3	1177	46.3	1177	6	6	7000	3500	7000	3430	12742	5780
	TF400	157.7	4005	78.5	1993	32.0	813	50.3	1277	50.3	1277	6	6	7000	3500	7000	3350	12795	5804
	TF430	169.5	4305	82.4	2093	35.9	913	54.2	1377	54.2	1377	6	6	7000	3450	7000	3300	12856	5832
	TF450	177.4	4505	86.3	2193	39.9	1013	58.1	1477	58.1	1477	6	6	7000	3400	7000	3250	12911	5856
	TF470	185.2	4705	88.3	2243	41.9	1063	60.1	1527	60.1	1527	6	6	7000	3350	6760	3200	12948	5873
	TF500	197.0	5005	92.2	2343	45.8	1163	64.1	1627	64.1	1627	6	6	5840	2650	5500	2500	12997	5895
	TF550	216.7	5505	100.1	2543	53.7	1363	71.9	1827	71.9	1827	6	6	5250	2380	4950	2250	13094	5940
	TF600	236.4	6005	108.0	2743	61.5	1563	79.8	2027	79.8	2027	6	6	3750	1700	3400	1550	13189	5983
	TF650	256.1	6505	115.9	2943	69.4	1763	86.7	2201	81.1	2061	3	3	3500	1590	3200	1450	13302	6034
	TF700	275.8	7005	123.7	3143	77.3	1963	94.5	2401	89.0	2261	3	3	2950	1350	2750	1250	13388	6073
	TS370	145.9	3705	74.5	1893	28.1	713	46.3	1177	46.3	1177	6	6	7000	3500	7000	3430	12742	5780
	TS400	157.7	4005	78.5	1993	32.0	813	50.3	1277	50.3	1277	6	6	7000	3500	7000	3350	12795	5804
	TS430	169.5	4305	82.4	2093	35.9	913	54.2	1377	54.2	1377	6	6	7000	3450	7000	3300	12856	5832
	TS450	177.4	4505	86.3	2193	39.9	1013	58.1	1477	58.1	1477	6	6	7000	3400	7000	3250	12911	5856
	TS470	185.2	4705	88.3	2243	41.9	1063	60.1	1527	60.1	1527	6	6	7000	3350	6760	3200	12948	5873
	TS500	197.0	5005	92.2	2343	45.8	1163	64.1	1627	64.1	1627	6	6	5840	2650	5500	2500	12997	5895
	TS550	216.7	5505	100.1	2543	53.7	1363	71.9	1827	71.9	1827	6	6	5250	2380	4950	2250	13094	5940
TS600	236.4	6005	108.0	2743	61.5	1563	79.8	2027	79.8	2027	6	6	3750	1700	3400	1550	13189	5983	
TS650	256.1	6505	115.9	2943	69.4	1763	85.6	2173	80.0	2033	3	3	3500	1590	3200	1450	13302	6034	
TS700	275.8	7005	123.7	3143	77.3	1963	93.4	2373	87.9	2233	3	3	2950	1350	2750	1250	13388	6073	
4-STAGE FULL FREE LIFT	QF610	240.7	6115	85.0	2158	40.0	1017	57.4	1459	57.4	1459	3	3	4200	1920	3950	1800	14565	6607
	QF660	260.4	6615	92.8	2358	47.9	1217	65.3	1659	65.3	1659	3	3	3800	1720	3500	1600	14697	6667
	QF700	276.2	7015	96.8	2458	51.9	1317	69.3	1759	69.3	1759	3	3	3100	1410	2850	1300	14764	6697
	QF745	293.9	7465	102.7	2608	57.8	1467	75.2	1909	74.1	1882	3	3	2420	1100	2200	1000	14865	6743
	QF790	311.6	7915	108.6	2758	63.7	1617	80.1	2035	74.1	1882	3	3	1750	800	1550	700	15087	6843

※ TS-Mast : Wide Visible 3-Stage Full Free Lift Mast with 2 Free Lift Cylinders.

\* Standard

## Load Capacity

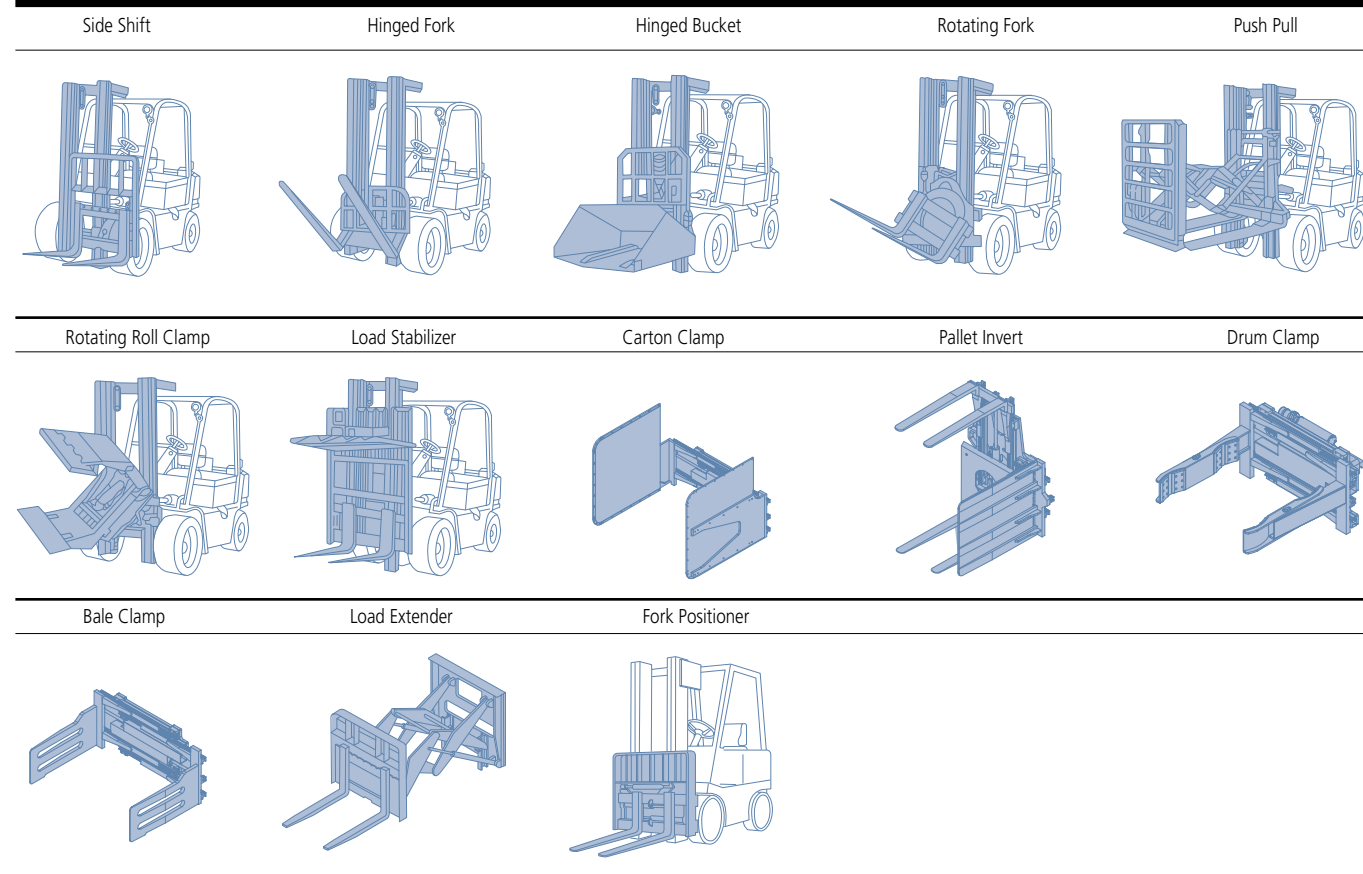




# New 9 Series

**25/30/35BH-9**

## Various Attachments

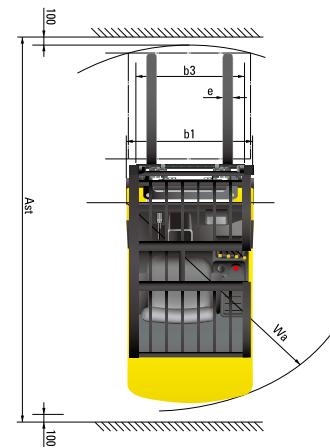
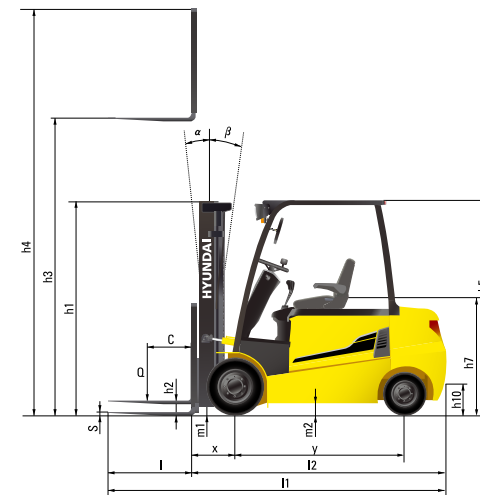


## Optional Items

- Fork(mm)  
25BH-9 : 900, 1000, 1050(STD), 1200, 1350, 1500, 1650, 1800  
30/35BH-9 : 900, 1050(STD), 1150, 1200, 1650, 1800, 1970, 2120, 2300, 2400
- Integral Sideshift, Fork positioner, Integral Fork positioner with shift
- Tire : Solid(STD)/ Pneumatic / Non-marking  
Wide tire[25/30BH-9 : Front tire (23x10-12)]
- Seat : Arm rest, Heat
- Finger Tip Control
- Cold Storage (for -30° cold working environments)
- M.C.V : 2-Spool (STD), 3-Spool, 4-Spool

- Auto Fork Leveling
- Beacon Lamp
- Weight Indicator
- Rear Work Lamp
- OPSS : Mast
- UL : ES, EE
- Cabin with heater
- Direction Switch on Lever
- Full LED Lamp

## Dimension



## Specification

### Identification

		HYUNDAI			
1. 1	Manufacturer	HYUNDAI			
1. 2	Manufacturer's type designation	25BH-9	30BH-9	35BH-9	
1. 3	Drive : electric(battery or mains), diesel, petrol, fuel gas, manual	electric	electric	electric	
1. 4	Type of operation : hand, pedestrian, standing, seated, order - picker	seated	seated	seated	
1. 5	Load capacity / rated load	Q kg	2,500	3,000	3,500
1. 6	Load center distance	c mm	500	500	500
1. 8	Load distance, center of drive axle to fork	x mm	458	458	470
1. 9	Wheelbase	y mm	1,575	1,719	1,719

### Weights

2. 1	Service weight	kg	4,710	5,130	5,605
2. 2	Axle loading, loaded front / rear	kg	6,340 / 870	7,237 / 893	8,054 / 1,051
2. 3	Axle loading , unloaded front / rear	kg	2,320 / 2,390	2,565 / 2,565	2,579 / 3,026

### Wheels, Chassis

3. 1	Tires : solid rubber(V), superelastic(SE), pneumatic(P), polyurethane(PE)	SE, P	SE, P	SE, P
3. 2	Tires size, front( Φ x width)	23X9-10	23X9-10	23X10-12
3. 3	Tires size, rear( Φ x width)	18X7-8	18X7-8	18X7-8
3. 5	Wheels, number front rear(x = driven wheels)	2x/2	2x/2	2x/2
3. 6	Track width, front	mm	993	1005
3. 7	Track width, rear	mm	980	980

### Basic Dimensions

4. 1	Mast / fork carriage tilt forward / backward	degrees	6/8	6/8	6/8
4. 2	Lowered mast height	h1 mm	2,162	2,162	2,243
4. 3	Free lift height	h2 mm	115	115	115
4. 4	Lift height	h3 mm	3,305	3,305	3,305
4. 5	Extended mast height	h4 mm	4,485	4,485	4,485
4. 7	Overhead guard (cab) height	h5 mm	2,210	2,210	2,210
4. 8	Seat height / Standing height	h7 mm	1,118	1,118	1,118
4. 12	Coupling height	h10 mm	396	396	396
4. 19	Overall length	l1 mm	3,415	3,545	3,650
4. 20	Length to face of forks	l2 mm	2,365	2,495	2,600
4. 21	Overall width	b1 mm	1,200	1,200	1,250
4. 22	Fork dimensions	l / e / s mm	1050x100x45	1050x122x45	1050x122x45
4. 23	Fork carriage ISO 2328, class / type A, B		II/A	III/A	III/A
4. 24	Fork - carriage width	b3 mm	1,102	1,102	1,102
4. 31	Ground clearance, loaded, under mast	m1 mm	117	117	128
4. 32	Ground clearance, centre of wheelbase	m2 mm	116	116	116
4. 33	Aisle width for pallets 1,000 x 1,200 crossways	Ast mm	3,516	3,664	3,676
4. 34	Aisle width for pallets 800 x 1,200 lengthways	Ast mm	3,694	3,851	3,863
4. 35	Turning radius	Wa mm	1,925	2,055	2,145
4. 36	Smallest pivot point distance	mm	-	-	-

### Performance Data

5. 1	Travel speed, loaded/ unloaded(80V)	km/h	18 / 19	18 / 19	18 / 19
5. 2	Lift speed, loaded/ unloaded(80V)	mm/s	410 / 600	340 / 500	300 / 500
5. 3	Lowering speed, loaded/unloaded	mm/s	500 / 450	500 / 450	500 / 450
5. 6	Max. drawbar pull, loaded/ unloaded S2 5min	N	18,022 / 17,767	17,865 / 17,747	16,846 / 16,914
5. 8	Max. gradient performance, loaded/ unloaded S2 5min	%	26 / 24	22 / 24	19 / 22
5. 10	Service brake		Hydraulic	Hydraulic	Hydraulic

### E - Motor

6. 1	Drive motor rating S2 60 min (80V)	kW	8.0x2	8.0x2	8.0x2
6. 2	Lift motor rating at S3 20%(S2 10min)	kW	19.7	19.7	19.7
6. 4	Battery voltage, nominal capacity K5	Ah	80 / 500	80 / 600	80 / 600
6. 5	Battery weight(min)	kg	1,470	1,780	1,780
	Battery compartment dimensions L / W / H	mm	714 / 1030 / 794	858 / 1030 / 794	

### Other Details

8. 1	Type of drive control	AC	AC	AC
------	-----------------------	----	----	----