



■ The photograph and the actual equipment may differ in appearance.

MOVING YOU FURTHER

HYUNDAI MATERIAL HANDLING **Environmentally - Friendly**

# 20/25/30/33DF-7



Head Office (Sales office)  
First tower, 55, Bundang-ro, Bundang-gu, Seongnam-si, Gyeonggi-do, Korea

PLEASE CONTACT

[www.hyundai-ce.com](http://www.hyundai-ce.com)

2018. 07 Rev. 12





**20DF/25DF/30DF/33DF -7****New criterion of Forklift Trucks**

Hyundai introduces a new line of 7series diesel forklift trucks.  
Excellent power and performance makes your business more profitable.



■ The photograph and the actual equipment may differ in appearance.



# High Power & Performance

## Powerful Engine

**HMC D4BB Engine** (20/25/30/33DF-7)  
39kW/2,500rpm

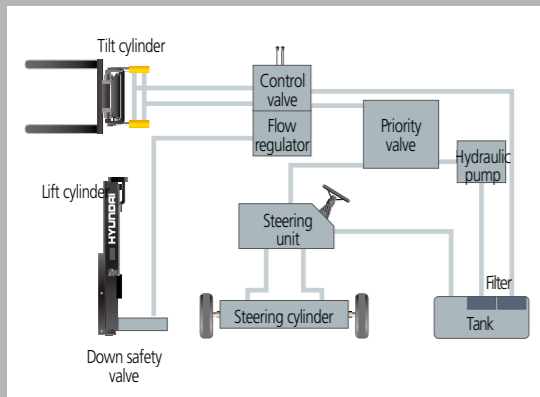


Market approved quality of HMC D4BB engine ensures incomparable performance, durability and additional value to the machine, 39kW of the engine is more than enough to suit

any work, not just with normal 39kW but with special attachments requiring high power as well (Eu stage III A certified)

## State-of-the-art hydraulic system

The latest large-capacity hydraulic system reacts quickly during operation, and a low-noise control valve increases both efficiency and durability.



## Increased mast tilting angle

Utilizing the standard mast tilting angle of 6 degrees forward and 10 degrees backward, the operator can safely and rapidly perform loading and unloading jobs.



## The new master on the job-site!

Smooth running, efficient and ergonomically designed, 20/25/30/33DF-7 series are made to meet your needs.

■ The photograph and the actual equipment may differ in appearance.



## Fast and stable performance

Being able to quickly raise and lower the mast, as well as tilt it forward and backward, provides the best operational conditions during unloading. When the truck is fully loaded, mast lowering speed is carefully controlled to ensure safety by the down control valve.

## Faster travel speed & gradeability

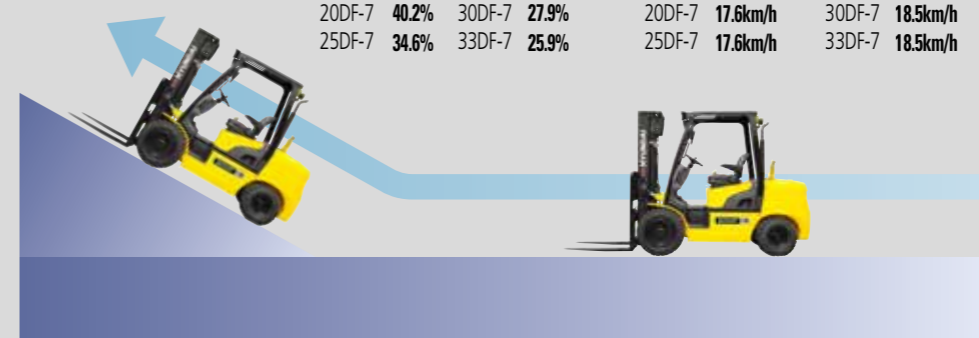
The powerful high-output engine provides greater acceleration, better gradeability and faster travel speed on any tough terrain or slope.

### Gradeability(Loaded)

20DF-7	40.2%	30DF-7	27.9%
25DF-7	34.6%	33DF-7	25.9%

### Travel speed(Unloaded)

20DF-7	17.6km/h	30DF-7	18.5km/h
25DF-7	17.6km/h	33DF-7	18.5km/h



## Wet disc brake system

The wet disc brake system is virtually maintenance free and is enclosed to protect from dust and water.



## Fully hydrostatic power steering

A hydraulic steering system always guarantees smooth and flexible steering, preventing overrun and kick-back.



## OPSS (Operator Presence Sensing System)

Control of mast tilting, lifting and lowering is not possible through operation of the appropriate control when the operator is not in the normal position. (Option)



## Comfortable Operation



### Adjustable steering wheel

Steering wheel with horn button can be adjusted by a lever on the right-hand side for the most comfortable operator position.



### Easy and safe shift lever

A single lever on the left side of the steering column gives the operator fast, easy control of direction.



### Multi-function switch lever

Multi-functional switch lever gives easy access to lights and horn.



### Quick response of operating control levers

Only minimal operator's effort is required for precise, safe and productive control.



■ The photograph and the actual equipment may differ in appearance.

## Ergonomically designed with the operator in mind!

A design based on human engineering relieves fatigue and increase operator's efficiency.



### Ergonomically positioned pedals

Based on human engineering, the accelerator, brake and inching pedals are optimally positioned for convenience while operating the equipment.



### Cup holder & console box

Additional storage spaces are located inside the operating space for operator's convenience.



### New high visibility for safe operation

The operator is able to work with increased safety and accuracy due to a wider view mast.

## Operator friendly gauges and water-resistant monitor panel



- |   |                           |
|---|---------------------------|
| ① Parking brake lamp                        | ⑤ Water separator lamp    |
| ② Directional indicators                    | ⑩ Pre-heater indicator    |
| ③ Fuel warning lamp                         | ⑪ Water temperature gauge |
| ④ Engine oil warning lamp                   | ⑫ Fuel gauge              |
| ⑥ Transmission oil temperature warning lamp | ⑬ Hour meter              |
| ⑦ Battery charging warning lamp             | ⑭ Engine check lamp       |
| ⑧ Air cleaner filter warning light          | ⑮ Seat belt warning       |
| ⑨ Working light indicator                   | ⑯ OPSS warning(Optional)  |

## Grammer Seat (Option)

An attractive and adjustable seat, based on a human engineering design, provides great comfort. And the angle of the armrest can be adjusted to reduce the fatigue of the driver.

- Applied the weight of the driver(45~170kg)
- ELR type seat belt standard
- Heater and Head Rest (Option)



## Full floating overhead guard mount

The anti-vibration rubber is installed between the guard and truck frame to reduce the source of vibration and noise while driving. This not only reduces operator's fatigue but also increases safety.





## Endurance & Safety

### Strong overhead guard

The safety overhead guard exceeds EEC and ANSI regulations and protects the operator during hazardous jobs.



### Parking brake

Ratchet type parking brake requires less efforts from the operator to set.



### Highly durable split type drive axle

The bevel gear set and hub reduction axle smoothly delivers desired torque to the drive wheels.



## Enhanced safety through high durability!

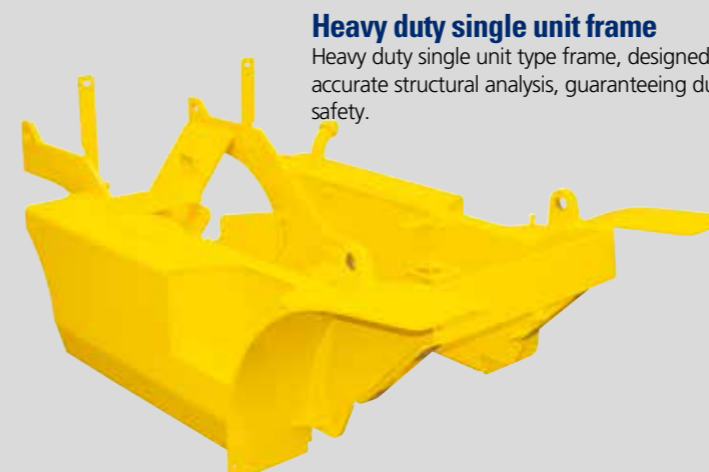
Safety and durability are priorities in the design of the equipment.

The photograph and the actual equipment may differ in appearance.



### Large footboard & hand grip

Wide "open" step offers convenience and safety when entering and exiting truck.



### Heavy duty single unit frame

Heavy duty single unit type frame, designed on the basis of accurate structural analysis, guaranteeing durability and safety.



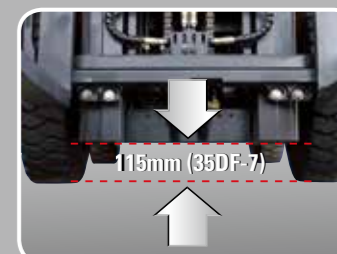
### Easy access of electrical Components

Various electric parts are centralized in dash board resulting in improvement in maintenance



### Bright, protected headlights

Bright, protected headlights is positioned for exceptional visibility.



### Ground clearance

The engine and transmission are assembled horizontally and positioned high in the frame to protect expansive components during operation on rugged surface.



Durability **Easy** Maintenance



Centralized design for **easy service!**

An ideal arrangement of component parts ensures easy access and convenience for maintenance.

The photograph and the actual equipment may differ in appearance.



**Electrically monitored air filter**

Air cleaner sensor alerts the operator of a restricted air filter and allows replacement before damage.



**Brake fluid reservoir**

Highly visible, easily accessible reservoir makes for guided daily inspections.



**An accessible, compact fuse box for easy inspection**



**Easy change air cleaner**

The air filter is readily accessible for cleaning or replacement. (7inch Cyclone Type)



**Tool-less floor plate for serviceability.**



**Large open engine hood**

Highly accessible engine compartment assures fast and efficient maintenance.



**Hydraulic oil check**

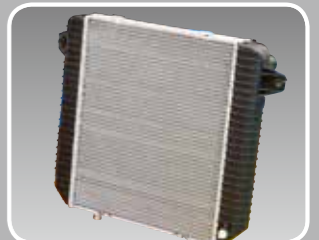


**Automatic self locking gas spring**

Engine compartment hood is held safely open by a self locking gas spring.



**Portable side cover**



**Aluminum radiator with superb protection against heat**



**Engine oil condition check**



Specification

Mast Specification (20DF-7)

Mast Type	Maximum Fork Height		Overall Height (Lowered)		Free Lift Height						Tilt Angle		Load capacity w/o side shift				Load capacity w/side shift				TRUCK WEIGHT (UNLOAD)									
					with bkr		w/o bkr		w/o bkr (3/4-SPOOL)				Single Tire		Double Tire		Single Tire		Double Tire		Single Tire		Double Tire							
	in	mm	in	mm	in	mm	in	mm	in	mm	deg	deg	24 in LC	500mm LC	24 in LC	500mm LC	24 in LC	500mm LC	24 in LC	500mm LC	24 in LC	500mm LC	lb	kg	lb	kg	lb	kg	lb	kg
	2-STAGE LIMITED FREE LIFT	*V300	118.1	3000	79.7	2025	6.1	155	6.1	155	6.1	155	6	10	4000	2000	4000	2000	4000	2000	4000	2000	7518	3410	7818	3546				
V330		129.9	3300	85.6	2175	6							10	4000	2000	4000	2000	4000	2000	7561	3430	7861	3566							
V350		137.8	3500	89.6	2275	6							10	4000	2000	4000	2000	4000	2000	7598	3447	7899	3583							
V370		145.7	3700	95.5	2425	6							10	4000	2000	4000	2000	4000	2000	7647	3469	7947	3605							
V400		157.4	4000	101.4	2575	6							10	4000	2000	4000	2000	4000	2000	7713	3499	8013	3635							
V430		169.3	4300	107.3	2725	6							6	4000	2000	4000	2000	4000	1925	4000	2000	7827	3550	8127	3687					
V450		177.2	4500	113.2	2875	6							6	4000	1970	4000	2000	4000	1895	4000	2000	7876	3572	8176	3709					
V470		185.0	4700	117.1	2975	6							6	4000	1940	4000	2000	4000	1865	4000	1925	7907	3587	8208	3723					
V500		196.9	5000	123.0	3125	6							6	4000	1900	4000	1940	3960	1825	4000	1865	7956	3609	8256	3745					
2-STAGE FULL FREE LIFT		VF295	116.1	2950	79.7	2025							33.3	845	51.9	1318	46.4	1178	6	6	4000	2000	4000	2000	4000	2000	4000	2000	7619	3456
	VF325	127.9	3250	85.6	2175	39.2	995	57.8	1468	52.3	1328	6	6	4000	2000	4000	2000	4000	2000	4000	2000	7693	3489	7995	3626					
3-STAGE FULL FREE LIFT	TF370	145.7	3700	71.9	1825	25.4	645	46.3	1177	45.1	1146	6	6	4000	2000	4000	2000	4000	2000	4000	2000	7818	3546	8120	3683					
	TF400	157.4	4000	75.8	1925	29.3	745	50.3	1277	49.1	1246	6	6	4000	2000	4000	2000	4000	1925	4000	2000	7871	3570	8173	3707					
	TF430	169.3	4300	79.7	2025	33.3	845	54.2	1377	53.0	1346	6	6	4000	1950	4000	2000	4000	1875	4000	1925	7911	3588	8213	3725					
	TF450	177.2	4500	83.7	2125	37.2	945	58.1	1477	58.1	1477	6	6	4000	1930	4000	1960	4000	1855	4000	1885	7959	3610	8261	3747					
	TF470	185.0	4700	85.6	2175	39.2	995	60.1	1527	58.9	1496	6	6	4000	1890	4000	1930	3960	1815	4000	1855	7989	3624	8291	3761					
	TF500	196.9	5000	89.6	2275	43.1	1095	64.1	1627	62.8	1596	6	6	3910	1840	4000	1890	3850	1765	3910	1815	8038	3646	8340	3783					
	TF550	216.5	5500	97.4	2475	51.0	1295	71.9	1827	71.9	1827	6	6	3740	1770	3850	1810	3690	1695	3740	1735	8124	3685	8426	3822					
	TF600	236.2	6000	105.3	2675	58.9	1495	79.8	2027	79.8	2027	6	6	3086	1400	3630	1750	3250	1325	3580	1675	8267	3750	8569	3887					
	TS370	145.7	3700	71.9	1825	25.4	645	46.3	1177	41.5	1053	6	6	4000	2000	4000	2000	4000	2000	4000	2000	7818	3546	8120	3683					
	TS400	157.4	4000	75.8	1925	29.3	745	50.3	1277	45.4	1153	6	6	4000	2000	4000	2000	4000	1925	4000	2000	7871	3570	8173	3707					
	TS430	169.3	4300	79.7	2025	33.3	845	54.2	1377	49.3	1253	6	6	4000	1950	4000	2000	4000	1875	4000	1925	7911	3588	8213	3725					
	TS450	177.2	4500	83.7	2125	37.2	945	58.1	1477	55.2	1403	6	6	4000	1930	4000	1960	4000	1855	4000	1885	7959	3610	8261	3747					
	TS470	185.0	4700	85.6	2175	39.2	995	60.1	1527	55.2	1403	6	6	4000	1890	4000	1930	3960	1815	4000	1855	7989	3624	8291	3761					
	TS500	196.9	5000	89.6	2275	43.1	1095	64.1	1627	59.2	1503	6	6	3910	1840	4000	1890	3850	1765	3910	1815	8038	3646	8340	3783					
TS550	216.5	5500	97.4	2475	51.0	1295	71.9	1827	69.0	1753	6	6	3740	1770	3850	1810	3690	1695	3740	1735	8124	3685	8426	3822						
TS600	236.2	6000	105.3	2675	58.9	1495	79.8	2027	76.9	1953	6	6	3086	1400	3630	1750	3250	1325	3580	1675	8267	3750	8569	3887						
4-STAGE FULL FREE LIFT	QF610	240.7	6115	85.7	2177	39.3	997	59.5	1512	57.6	1462	3	3	3200	1480	3240	1490	3060	1405	3060	1415	8800	3992	9104	4130					
	QF660	260.4	6615	93.6	2377	47.1	1197	67.4	1712	65.4	1662	3	3	3000	1380	3060	1400	2870	1305	2870	1325	8932	4052	9236	4190					
	QF700	276.2	7015	97.5	2477	51.1	1297	71.3	1812	69.4	1762	3	3	2580	1180	2890	1310	2450	1105	2710	1235	8998	4082	9305	4221					
	QF745	293.9	7465	103.4	2627	57.0	1447	75.4	1915	69.4	1762	3	3	2380	900	2690	1210	2270	825	2500	1135	9100	4128	9538	4327					
	QF790	311.6	7915	109.3	2777	62.9	1597	75.4	1915	69.4	1762	3	3	1460	600	1870	810	1340	525	1700	735	9320	4228	9627	4367					

※ TS-Mast : Wide Visible 3-Stage Full Free Lift Mast with 2 Free Lift Cylinders.

\* Standard

Mast Specification (25DF-7)

Mast Type	Maximum Fork Height		Overall Height (Lowered)		Free Lift Height						Tilt Angle		Load capacity w/o side shift				Load capacity w/side shift				TRUCK WEIGHT (UNLOAD)									
					with bkr		w/o bkr		w/o bkr (3/4-SPOOL)				Single Tire		Double Tire		Single Tire		Double Tire		Single Tire		Double Tire							
	in	mm	in	mm	in	mm	in	mm	in	mm	deg	deg	24 in LC	500mm LC	24 in LC	500mm LC	24 in LC	500mm LC	24 in LC	500mm LC	24 in LC	500mm LC	24 in LC	500mm LC	lb	kg	lb	kg	lb	kg
	2-STAGE LIMITED FREE LIFT	*V300	118.1	3000	79.7	2025	6.1	155	6.1	155	6.1	155	6	10	5000	2500	5000	2500	5000	2500	5000	2500	8208	3723	8508	3859				
V330		129.9	3300	85.6	2175	6							10	5000	2500	5000	2500	5000	2500	8251	3743	8551	3879							
V350		137.8	3500	89.6	2275	6							10	5000	2500	5000	2500	5000	2500	8288	3760	8589	3896							
V370		145.7	3700	95.5	2425	6							10	5000	2500	5000	2500	5000	2425	5000	2500	8337	3782	8637	3918					
V400		157.4	4000	101.4	2575	6							10	5000	2460	5000	2500	5000	2385	5000	2425	8403	3812	8703	3948					
V430		169.3	4300	107.3	2725	6							6	5000	2410	5000	2470	4960	2335	5000	2395	8517	3863	8817	4000					
V450		177.2	4500	113.2	2875	6							6	4900	2350	5070	2430	4850	2275	4960	2355	8566	3885	8866	4022					
V470		185.0	4700	117.1	2975	6							6	4850	2320	4960	2410	4790	2245	4900	2335	8597	3900	8898	4036					
V500		196.9	5000	123.0	3125	6							6	4740	2260	4850	2350	4680	2185	4790	2275	8646	3922	8946	4058					
2-STAGE FULL FREE LIFT		VF295	116.1	2950	79.7	2025							33.3	845	53.6	1361	48	1221	6	6	5000	2500	5000	2500	5000	2500	5000	2500	8309	3769
	VF325	127.9	3250	85.6	2175	39.2	995	59.5	1511	54	1371	6	6	5000	2500	5000	2500	5000	2500	5000	2500	8383	3802	8685	3939					
3-STAGE FULL FREE LIFT	TF370	145.7	3700	71.9	1825	25.4	645	46.3	1177	45	1146	6	6	5000	2450	5000	2500	5000	2375	5000	2425	8508	3859	8810	3996					
	TF400	157.4	4000	75.8	1925	29.3	745	50.3	1277	49	1246	6	6	5000	2400	5000	2470	4960	2325	5000	2395	8561	3883	8863	4020					
	TF430	169.3	4300	79.7	2025	33.3	845	54.2	1377	53	1346	6	6	4900	2340	5000	2410	4850	2265	4900	2335	8601	3901	8903	4038					
	TF450	177.2	4500	83.7	2125	37.2	945	58.1	1477	58	1477	6	6	4790	2310	4900	2380	4740	2235	4850	2305	8649	3923	8951	4060					
	TF470	185.0	4700	85.6	2175																									

Specification

Mast Specification (30DF-7)

Mast Type	Maximum Fork Height		Overall Height (Lowered)		Free Lift Height						Tilt Angle		Load capacity w/o side shift				Load capacity w/side shift				TRUCK WEIGHT (UNLOAD)										
					with bkr		w/o bkr		w/o bkr (3/4-SPOOL)		Fwd	Bwd	Single Tire		Double Tire		Single Tire		Double Tire		Single Tire		Double Tire								
	in	mm	in	mm	in	mm	in	mm	in	mm	deg	deg	24 in LC	500mm LC	24 in LC	500mm LC	24 in LC	500mm LC	24 in LC	500mm LC	24 in LC	500mm LC	lb	kg	lb	kg	lb	kg	lb	kg	
	2-STAGE LIMITED FREE LIFT	*V300	118.1	3000	80.3	2040	6.1	155	6.1	155	6.1	155	6	10	6000	3000	6000	3000	6000	3000	6000	3000	6000	3000	9213	4179	9404	4266			
V330		129.9	3300	86.2	2190	6							10	6000	3000	6000	3000	6000	3000	6000	3000	6000	3000	6000	3000	6000	3000	9257	4199	9448	4286
V350		137.8	3500	90.2	2290	6							10	6000	3000	6000	3000	6000	3000	6000	3000	6000	3000	6000	3000	6000	3000	9297	4217	9488	4304
V370		145.7	3700	96.1	2440	6							10	6000	3000	6000	3000	6000	3000	6000	3000	6000	3000	6000	3000	6000	3000	9347	4240	9538	4326
V400		157.4	4000	102.0	2590	6							10	6000	3000	6000	3000	5950	2880	6000	2920	9415	4271	9606	4357						
V430		169.3	4300	107.9	2740	6							6	5950	2900	6000	2950	5840	2800	5950	2850	9531	4323	9722	4410						
V450		177.2	4500	113.8	2890	6							6	5840	2850	6000	2920	5730	2750	5840	2820	9581	4346	9772	4433						
V470		185.0	4700	117.7	2990	6							6	5730	2800	5890	2880	5620	2700	5780	2780	9615	4361	9806	4448						
V500		196.9	5000	123.6	3140	6							6	5620	2750	5780	2820	5510	2650	5620	2720	9665	4384	9856	4471						
2-STAGE FULL FREE LIFT		VF295	116.1	2950	80.3	2040							33.9	860	51.7	1314	51.7	1314	6	6	6000	3000	6000	3000	6000	3000	6000	3000	9302	4219	9492
	VF325	127.9	3250	86.2	2190	39.8	1010	57.6	1464	57.6	1464	6	6	6000	3000	6000	3000	6000	3000	6000	3000	9379	4254	9569	4341						
3-STAGE FULL FREE LIFT	TF370	145.7	3700	72.4	1840	26.0	660	43.9	1114	38.4	975	6	6	6000	3000	6000	3000	5950	2880	6000	2880	9543	4329	9733	4415						
	TF400	157.4	4000	76.4	1940	29.9	760	47.8	1214	42.3	1075	6	6	5890	2880	6000	2950	5780	2780	5890	2850	9597	4353	9787	4439						
	TF430	169.3	4300	80.3	2040	33.9	860	51.7	1314	46.3	1175	6	6	5780	2830	5950	2880	5670	2730	5780	2780	9646	4375	9835	4461						
	TF450	177.2	4500	84.3	2140	37.8	960	55.7	1414	52.2	1325	6	6	5670	2780	5840	2830	5560	2680	5670	2730	9701	4401	9891	4487						
	TF470	185.0	4700	86.2	2190	39.8	1010	57.6	1464	52.2	1325	6	6	5560	2750	5730	2790	5510	2650	5620	2690	9733	4415	9922	4501						
	TF500	196.9	5000	90.2	2290	43.7	1110	61.6	1564	56.1	1425	6	6	5450	2680	5620	2730	5340	2580	5510	2630	9782	4437	9972	4523						
	TF550	216.5	5500	98.0	2490	51.6	1310	69.4	1764	65.9	1675	6	6	5340	2580	5400	2630	5180	2480	5290	2530	9879	4481	10069	4567						
	TF600	236.2	6000	105.9	2690	59.4	1510	77.3	1964	73.8	1875	6	6	4145	1880	5230	2530	4290	1780	5070	2430	10034	4551	10223	4637						
	TS370	145.7	3700	72.4	1840	26.0	660	43.9	1114	41.5	1053	6	6	6000	3000	6000	3000	5950	2880	6000	2880	9543	4329	9733	4415						
	TS400	157.4	4000	76.4	1940	29.9	760	47.8	1214	45.4	1153	6	6	5890	2880	6000	2950	5780	2780	5890	2850	9597	4353	9787	4439						
	TS430	169.3	4300	80.3	2040	33.9	860	51.7	1314	49.3	1253	6	6	5780	2830	5950	2880	5670	2730	5780	2780	9646	4375	9835	4461						
	TS450	177.2	4500	84.3	2140	37.8	960	55.7	1414	55.2	1403	6	6	5670	2780	5840	2830	5560	2680	5670	2730	9701	4401	9891	4487						
	TS470	185.0	4700	86.2	2190	39.8	1010	57.6	1464	55.2	1403	6	6	5560	2750	5730	2790	5510	2650	5620	2690	9733	4415	9922	4501						
	TS500	196.9	5000	90.2	2290	43.7	1110	61.6	1564	59.2	1503	6	6	5450	2680	5620	2730	5340	2580	5510	2630	9782	4437	9972	4523						
TS550	216.5	5500	98.0	2490	51.6	1310	69.4	1764	69.0	1753	6	6	5340	2580	5400	2630	5180	2480	5290	2530	9879	4481	10069	4567							
TS600	236.2	6000	105.9	2690	59.4	1510	77.3	1964	76.9	1953	6	6	4145	1880	5230	2530	4290	1780	5070	2430	10034	4551	10223	4637							
4-STAGE FULL FREE LIFT	QF610	240.7	6115	85.6	2175	37.6	955	57.0	1449	57.0	1449	3	3	3880	1780	4960	2270	3700	1680	4670	2170	10429	4731	10597	4807						
	QF660	260.4	6615	93.5	2375	47.0	1195	64.9	1649	64.9	1649	3	3	3660	1670	4720	2160	3460	1570	4450	2060	10562	4791	10729	4867						
	QF700	276.2	7015	97.4	2475	51.0	1295	68.9	1749	68.9	1749	3	3	3020	1370	4480	2050	2870	1270	4230	1950	10628	4821	10798	4898						
	QF745	293.9	7465	103.3	2625	56.9	1445	74.8	1899	69.4	1762	3	3	2710	1050	4230	1920	2580	950	3990	1820	10729	4867	10897	4943						
	QF790	311.6	7915	109.3	2775	62.8	1595	75.4	1915	69.4	1762	3	3	1680	750	2490	1090	1540	650	2270	990	10950	4967	11119	5044						

※ TS-Mast : Wide Visible 3-Stage Full Free Lift Mast with 2 Free Lift Cylinders.

\* Standard

Mast Specification (33DF-7)

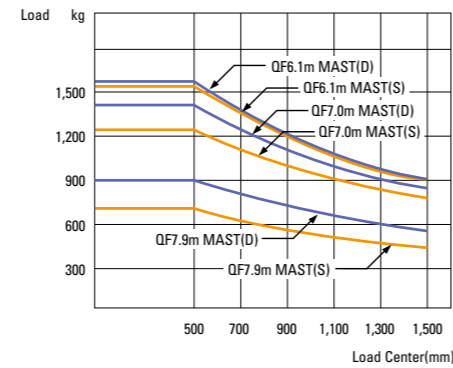
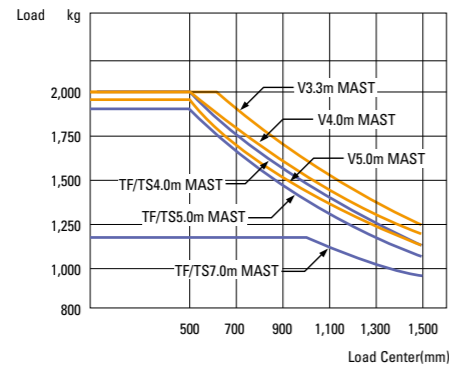
Mast Type	Maximum Fork Height		Overall Height (Lowered)		Free Lift Height						Tilt Angle		Load capacity w/o side shift				Load capacity w/side shift				TRUCK WEIGHT (UNLOAD)										
					with bkr		w/o bkr		w/o bkr (3/4-SPOOL)		Fwd	Bwd	Single Tire		Double Tire		Single Tire		Double Tire		Single Tire		Double Tire								
	in	mm	in	mm	in	mm	in	mm	in	mm	deg	deg	24 in LC	500mm LC	24 in LC	500mm LC	24 in LC	500mm LC	24 in LC	500mm LC	24 in LC	500mm LC	24 in LC	500mm LC	lb	kg	lb	kg	lb	kg	
	2-STAGE LIMITED FREE LIFT	*V300	118.1	3000	83.1	2110	6.1	155	6.1	155	6.1	155	6	10	6500	3300	6500	3300	6500	3300	6500	3300	6500	3300	9678	4390	9879	4481			
V330		129.9	3300	89.0	2260	6							10	6500	3300	6500	3300	6500	3300	6500	3300	6500	3300	6500	3300	6500	3300	9731	4414	9932	4505
V350		137.8	3500	92.9	2360	6							10	6500	3300	6500	3300	6500	3300	6500	3300	6500	3300	6500	3300	6500	3300	9766	4430	9966	4521
V370		145.7	3700	98.8	2510	6							10	6500	3300	6500	3300	6500	3300	6500	3300	6500	3300	6500	3300	6500	3300	9818	4454	10019	4545
V400		157.4	4000	104.7	2660	6							10	6500	3300	6500	3300	6500	3300	6500	3300	6500	3300	6500	3300	6500	3300	9889	4486	10090	4577
V430		169.3	4300	110.6	2810	6							6	6500	3300	6500	3300	6500	3275	6500	3300	10007	4539	10208	4630						
V450		177.2	4500	116.5	2960	6							6	6500	3275	6500	3300	6500	3200	6500	3300	10059	4563	10260	4654						
V470		185.0	4700	120.5	3060	6							6	6500	3225	6500	3300	6440	3150	6500	3250	10094	4579	10295	4670						
V500		196.9	5000	126.4	3210	6							6	6440	3175	6500	3250	6330	3100	6500	3150	10146	4602	10347	4693						
2-STAGE FULL FREE LIFT		VF295	116.1	2950	83.1	2110							36.6	930	54.5	1384	54.5	1384	6	6	6500	3300	6500	3300	6500	3300	6500	3300	9763	4429	9964
	VF325	127.9	3250	89.0	2260	42.5	1080	60.4	1534	60.4	1534	6	6	6500	3300	6500	3300	6500	3300	6500	3300	9841	4464	10042	4555						
3-STAGE FULL FREE LIFT	TF370	145.7	3700	74.4	1890	28.0	710	42.1	1069	42.1	1069	6	6	6500	3300	6500	3300	6500	3300	6500	3300	10077	4571	10278	4662						
	TF400	157.4	4000	78.3	1990	31.9	810	46.0	1169	46.0	1169	6	6	6500	3275	6500	3300	6500	3200	6500	3300	10126									



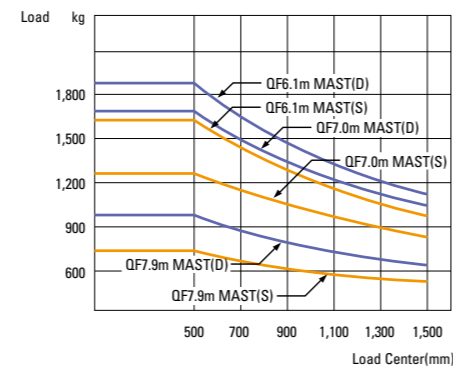
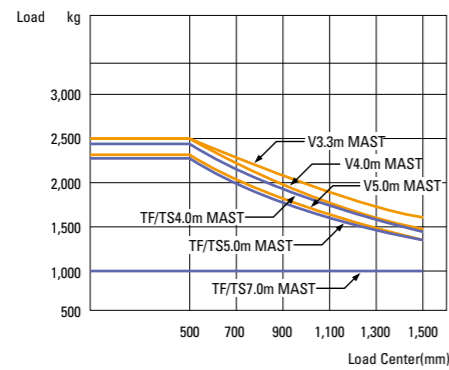
Specification

Load Capacity

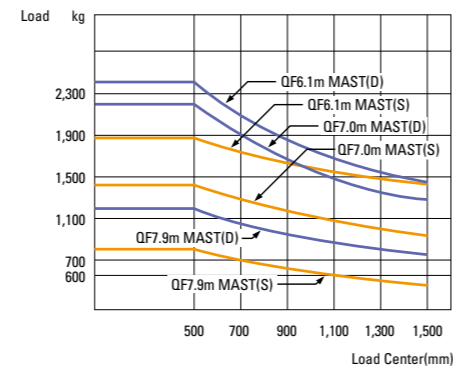
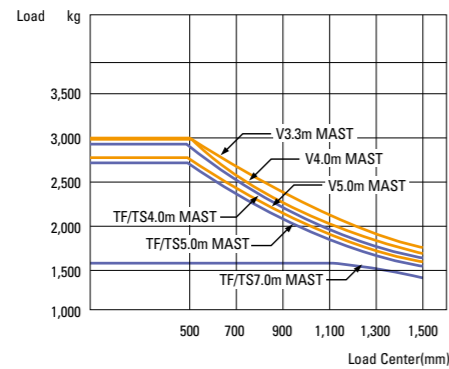
20DF-7



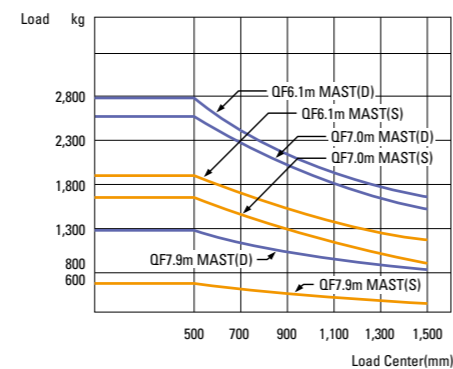
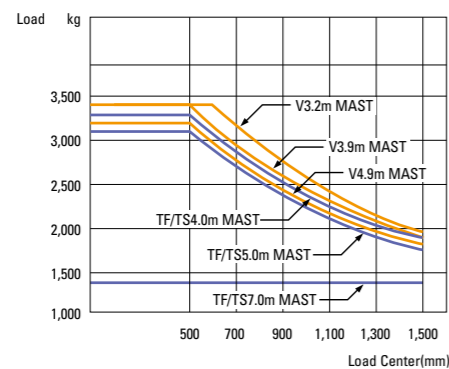
25DF-7



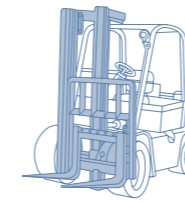
30DF-7



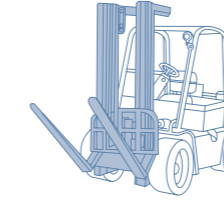
33DF-7



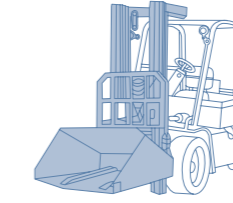
Various Attachments



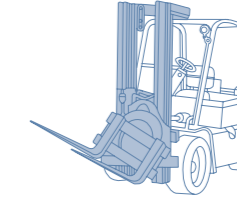
Side Shift



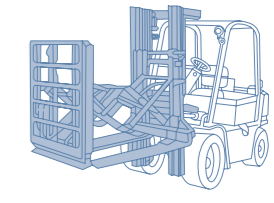
Hinged Fork



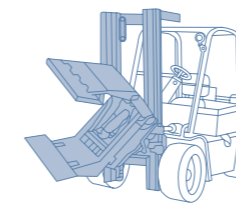
Hinged Bucket



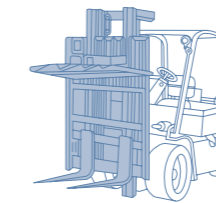
Rotating Fork



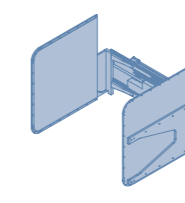
Push Pull



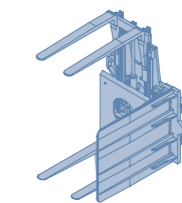
Rotating Roll Clamp



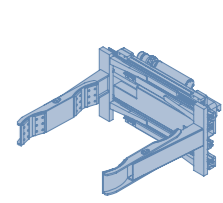
Load Stabilizer



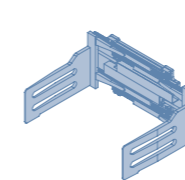
Carton Clamp



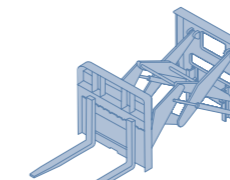
Pallet Invert



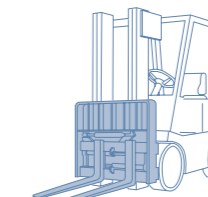
Drum Clamp



Bale Clamp



Load Extender



Fork Positioner

Optional Items

• Fork (LxWxT)(mm)

20DF/25DF-7

900 X 100 X 45	1,000 X 100 X 45	1,200 X 100 X 45
1,350 X 100 X 45	1,500 X 100 X 45	1,650 X 100 X 45
1,800 X 100 X 45		

30DF/33DF-7

900 X 122 X 45	1,000 X 122 X 45	1,200 X 122 X 45
1,350 X 122 X 45	1,500 X 122 X 45	1,650 X 122 X 45
1,800 X 122 X 45	2,150 X 122 X 45	

• Tire (Solid, No-Marking, Double)

• Opss (Travel / Travel + Mast)

• MCV (3-Spool / 4-Spool)

• Master S/W

• Beacon Lamp

• Hazard S/W

• Rear Work Lamp

• Cabin & Heater

• Pre Cleaner

• TS-MAST

• QF-MAST

• Tilting (6°/6°, 3°/3°)

• Sideshift

• Integrated Sideshift

• Attach Piping (3-Spool piping / 4-Spool piping)

• Hose - Reel (VF)

• Exhaust (Horizontal)

• Seat (Belt, Arm rest, Hip rest)

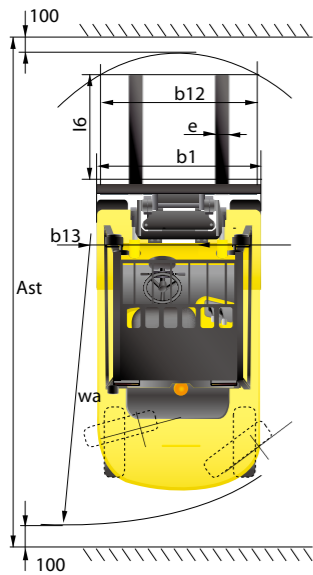
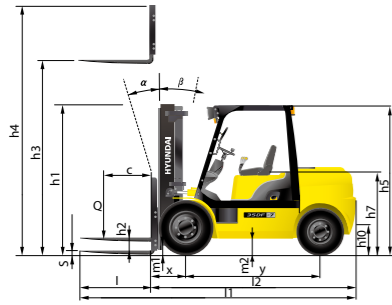
• Grammer seat (Arm rest, Backrest Ext, Heat, Buckle SW)



Specification

MEMO

Dimension



Specification

Identification						
1.1	Manufacturer		Hyundai	Hyundai	Hyundai	Hyundai
1.2	Manufacturer's type designation		20DF-7	25DF-7	30DF-7	33DF-7
1.3	Drive: electric(battery or mains),diesel,petrol,fuel gas,manual		DIESEL	DIESEL	DIESEL	DIESEL
1.4	Type of operation:hand,pedestrian,standing,seated,order-picker		seated	seated	seated	seated
1.5	Load capacity / rated load	kg	2,000	2,500	3,000	3,300
1.6	Load center distance	c mm	500	500	500	500
1.8	Load distance, center of drive axle to fork	x mm	468	468	468	468
1.9	Wheelbase	y mm	1,650	1,650	1,700	1,700
Weights						
2.1	Service weight(including battery)	kg	3,380	3,693	4,149	4,443
2.2	Axle loading, loaded front/rear	kg	4,704 / 675	5,432 / 761	6,281 / 868	6,792 / 951
2.3	Axle loading, unloaded front/rear	kg	1,531 / 1,849	1,465 / 2,228	1,572 / 2,577	1,613 / 2,830
Wheels, Chassis						
3.1	Tires:solid rubber, superelastic, pneumatic, polyurethane		pneumatic	pneumatic	pneumatic	pneumatic
3.2	Tires size, front		7.00-12-12PR	7.00-12-12PR	8.15-15-14PR	8.15-15-14PR
3.3	Tires size, rear		6.50-10-12PR	6.50-10-12PR	6.50-10-12PR	6.50-10-12PR
3.5	Wheels, number front x rear(x=driven wheels)		x2 / 2	x2 / 2	x2 / 2	x2 / 2
3.6	Track width, front	mm	965	965	1,005	1,005
3.7	Track width, rear	mm	980	980	980	980
Basic Dimensions						
4.1	Mast / fork carriage tilt forward / backward (α/β)	degrees	6 / 10	6 / 10	6 / 10	6 / 10
4.2	Lowered mast height	h1 (mm)	2,025	2,025	2,040	2,260
4.3	Free lift	h2 (mm)	155	155	155	155
4.4	Lift height	h3 (mm)	3,000	3,000	3,000	3,300
4.5	Extended mast height	h4 (mm)	4,185	4,185	4,185	4,485
4.7	Overhead load guard(cab) height	h5 (mm)	2,160	2,160	2,180	2,180
4.8	Seat height / standing height	h7 (mm)	1,110	1,110	1,130	1,130
4.12	Coupling height	h10 (mm)	283	283	299	299
4.19	Overall length	l1 (mm)	3,597	3,657	3,742	3,782
4.20	Length to face of forks	l2 (mm)	2,547	2,607	2,692	2,732
4.21	Overall width	b1 (mm)	1,160	1,160	1,230	1,230
4.22	Fork dimensions(hook type)	s / e / l1 (mm)	45x100x1,050	45x100x1,050	45x122x1,050	45x122x1,050
4.23	Fork carriage ISO 2328, class / type A,B		II / A	II / A	III / A	III / A
4.24	Fork-carriage width	b12 (mm)	1,102	1,102	1,102	1,102
4.31	Ground clearance, loaded, under mast	m1(mm)	130	130	145	145
4.32	Ground clearance, centre of wheelbase	m2(mm)	171	171	189	189
4.33	Aisle width for pallets 1,000x1,200 crossways(LxW)Ast(mm)		3,928	3,981	4,066	4,102
4.34	Aisle width for pallets 800x1,200 lengthways(WxL) Ast(mm)		4,128	4,181	4,266	4,302
4.35	Turning radius	Wa(mm)	2,260	2,313	2,398	2,434
4.36	Smallest pivot point distance	b13(mm)	714	714	731	731
Performance Data						
5.1	Travel speed, unloaded	km/h	17.6	17.6	18.5	18.5
5.2	Lift speed, loaded/ unloaded	mm/s	570 / 590	550 / 590	460 / 480	450 / 480
5.3	Lowering speed, loaded/unloaded	mm/s	500 / 450	500 / 450	500 / 450	500 / 450
5.5	Drawbar pull, loaded	kg	2,257	2,275	2,161	2,162
5.7	Gradient performance, loaded/ unloaded	%	40.2 / 24.6	34.6 / 21.6	27.9 / 20.6	25.9 / 19.2
5.9	Acceleration time, loaded/ unloaded(10m)	sec	NA	NA	NA	NA
5.10	Service brake		FOOT	FOOT	FOOT	FOOT
Engine						
6.1	Engine manufacturer / type		HMC D4BB	HMC D4BB	HMC D4BB	HMC D4BB
6.2	Engine power acc. to ISO 1585	kW	39	39	39	39
6.3	Rated speed	1/min	2,500	2,500	2,500	2,500
6.4	No. of cylinder / cubic capacity	anz/cm <sup>3</sup>	4 / 2,604	4 / 2,604	4 / 2,604	4 / 2,604
6.5	Fuel consumption acc. To VDI cycle	ℓ / h	2.0	2.2	2.5	2.6
Other Details						
8.1	Type of drive control		power shift	power shift	power shift	power shift
8.2	Operating pressure(system / attach)	kgf/cm <sup>2</sup>	200 / 165	200 / 165	200 / 165	200 / 165
8.3	Attach oil volume	ℓ / min	54	54	54	54
8.4	Noise	db(A)	80	80	80	80

■ Contact your Hyundai dealer for more information. The machine shown may vary according to International standards.